









Modern Classicism: Heritage Reimagined

At Samuel & Sons, we continue to explore the enduring dialogue between tradition and innovation. This Spring, we turn our attention to a renewed sense of classicism, a design movement rooted in craftsmanship, proportion, and beauty. Across interiors, this return to formality is balanced by a contemporary sensibility, where heritage techniques and modern artistry meet in quiet harmony.

In a world increasingly defined by impermanence, these collections offer a sense of substance and stillness with crafted details that lend interiors a sense of permanence, depth, and grace. Designed for those who value design as both discipline and art, **Romaunt** and **Ashton** bring texture, warmth, and architectural refinement to every space they inhabit. They invite clients to create interiors that feel grounded yet elevated, richly layered yet timeless.

Romaunt created in collaboration with **And Objects** cofounders **Martin Brudnizki** and **Nicholas Jeanes**, is a contemporary homage to the Pre-Raphaelite painters and a study in refined luxury. The collection combines color, narrative, and craftsmanship with painterly intensity, ranging from fringes that move like brushstrokes to cords knotted and wrapped by hand and borders embroidered in sculptural scallops. Each design reflects an elevated approach to ornamentation, where artistry and restraint meet, and luxury is defined not by excess but by the mastery of detail and the purity of the hand.

Balancing this decorative reverie, **Ashton** distills the fine tailoring of English menswear into borders, cords, and fringes that evoke the atmosphere of the English countryside. Crafted from wool, each pattern is woven with grounding warmth and sophistication that lends both structure and soft geometry.

Together, **Romaunt** and **Ashton** embody modern classicism — reimagined heritage through artistry, materiality, and enduring craft. They remind us that true luxury lies not in ornament alone, but in intention: the thoughtful details that bring clarity, depth, and permanence to the modern interior.





CONTENTS

Romaunt
6-13

Trimming Trailblazers
14-19

Ashton
20-25

Education Platform
26-27

Devon
28-29

Westport
30-31

Annecy, *Third Edition*
32-33

Technical Specs
34-37

Captions
38-39

SAMUEL & SONS
MARTIN BRUDNIZKI



Romaunt Collection

Inspired by the romanticism and artistry of the Pre-Raphaelites, Romaunt, created in collaboration with And Objects cofounders Martin Brudnizki and Nicholas Jeanes, weaves a poetic narrative through exquisite fringes, tassels, borders, and rosettes in a palette of rich and opulent hues.







"The Pre-Raphaelites were captivated by nature, detail, and storytelling, and those same qualities felt like a natural starting point for this collection. Passementerie is, at its heart, about decoration and expression — a finishing touch that can completely transform a room. With the Romaunt collection, we have drawn on that sense of romance and artistry to create trimmings that feel rich, layered, and full of life."

Martin Brudnizki





ABOUT THE DESIGNERS

Martin Brudnizki is the founder and principal of MBDS and co-founder of And Objects. Born in Stockholm, he studied Economics in Sweden before studying Interior Architecture in London, admiring designers such as Carlo Scarpa and Dorothy Draper. After roles at leading design firms, he established MBDS in 2000, before opening a second studio in New York in 2012. Now globally recognised, the studio collaborates with clients that include LVMH, Belmond, Rosewood, Four Seasons, and Soho House.

In 2015, Martin launched And Objects, a product design studio developing furniture, lighting, and accessories, with business partner Nicholas Jeanes. The brand opened its first shop on Pimlico Road in 2023, alongside a showroom at MBDS New York.

Named among the AD100, House & Garden's Top 100, and Elle Decor's A-List, Martin has been described by *Wallpaper* as 'one of the best restaurant and hotel designers of his generation'.



Inside Romaunt

We sat down with And Objects co-founders Martin Brudnizki and Nicholas Jeanes to explore our new collaboration, Romaunt. In conversation, they reflect on the artistic influences, design philosophy, and considered craftsmanship that shaped each inspired piece.

Samuel & Sons: Capture the Romaunt Collection in three words.

MARTIN BRUDNIZKI: Romantic, lyrical, intricate.

S&S: How did you come to the name Romaunt?

MB: The word Romaunt means 'romantic tale' in French, a name that felt fitting for a collection inspired by the Pre-Raphaelites, who were themselves storytellers through colour and detail. The movement often looked to historic themes, not to replicate them, but to reinterpret them with intensity and feeling. In much the same way, Romaunt allowed us to signal that sense of narrative and craftsmanship. It nods to history yet feels open to reinvention, which is very much the spirit of the collection.

S&S: What drew you to the Pre-Raphaelite movement as inspiration, and how does it translate into the collection?

MB: The Pre-Raphaelites were committed to beauty, colour, nature, emotion, and meticulous detail. Their work has a kind of interior life, where you sense depth beneath the ornament. We were drawn to that philosophy more than any singular aesthetic. Romaunt translates those ideas into passementerie through layered textures, sculptural forms, and a palette inspired by the opulent tones of the movement.

In the early stages, we explored these ideas through the lens of a salon; a setting where art, textiles, and conversation would naturally converge. The concept evolved, but the essence remained: a sense of intimacy, creative exchange, and quiet romanticism. Romaunt aims to bring that feeling into the finer details of a room.

S&S: How do you see passementerie as a medium for telling stories in interiors?

MB: Passementerie is sometimes thought of as subtle, but it is never silent. A braid or cord can shift the entire character of a piece; it frames, connects, softens, or sharpens. In many ways, it carries a narrative of its own. The separation of materiality is defined by passementerie; there is a beginning, a middle, and an end, and that journey has always felt like a form of storytelling to me. It is rooted in handwork, symbolism, and the small, deliberate gestures that give a space its emotional life. These details may be modest in scale, but they help a room reveal itself with a kind of quiet confidence.

How does the collection bridge its historic roots with today's interiors?

There has been a growing revival of trimmed upholstery — bullion, fringe, decorative braiding — but the key is to interpret these traditions for modern life. We focused on essence rather than imitation. The collection draws from the movement's fascination with nature, richness, and emotion, but is translated through contemporary proportions and a palette that works effortlessly today. It isn't about recreating the past; it's about letting the past inform a more expressive present.

S&S: Your interiors are known for their expert, expressive use of passementerie. What did you feel was missing in the world of trimmings, and how does Romaunt fill that space?

MB: I felt there was room for more charm; pieces that are decorative without being fussy, and characterful without shouting. The Romaunt collection introduces sculptural silhouettes, tactility, and palettes that feel sophisticated yet a touch eccentric. They are trimmings that support a room, bringing definition and personality without overwhelming it.

S&S: Do you have a favorite piece from the collection?

MB: They each bring something different to a room, so choosing a favourite feels rather impossible, they all have their own intentions and applications. That said, I do have a soft spot for the Tasseled Bullion Fringe. We have applied the Tasseled Bullion Fringe in Rossetti Crimson to a sofa in our London flat, and it completely transforms the piece. Without trims, sofas can feel a little unresolved; this one lends definition and a touch of theatre. It's a showstopping detail, yet beautifully balanced.

S&S: The level of hand-finishing is extraordinary. What does this human touch bring to the collection?

MB: It brings life. You notice the subtle variations, the tension in the cord, the rhythm of the stitching. That controlled, considered human touch is the difference between something made and something crafted.

S&S: How do you envision designers using Romaunt in their projects?

MB: With confidence, and perhaps a sense of play. The collection ranges from bold borders to quieter cords, giving designers the freedom to create moments of intimacy or drama. My hope is that it helps shape spaces that linger in the memory; providing the small, expressive details that make a room feel truly lived in.

S&S: What excites you most about bringing Romaunt into the world?

MB: Seeing how others interpret it. Once a collection leaves the studio, it begins a new chapter. I am excited to watch Romaunt weave its way into different interiors, different stories, and different lives.

S&S: How does your studio's design philosophy align with the themes and aesthetic of the collection?

NICHOLAS JEANES: At And Objects, we are drawn to pieces

with character; objects that feel considered, crafted, and quietly expressive. The themes of Romaunt, particularly its connection to nature and ornament, align with that approach. We treated these trimmings much like we would a piece of furniture: thinking about form, proportion, tactility, and ultimately how they contribute to the atmosphere of a room.

S&S: What were some of the design challenges you encountered in developing trimmings rather than furniture or larger objects?

NJ: Scale, because when you are working with something only a few centimeters wide, every fibre and twist becomes important. There is no room for anything extraneous. Another challenge was balancing ornament with versatility. The pieces needed to feel distinctive but still sit comfortably with a range of upholstery styles and interior moods.

S&S: Is there a detail or element within the collection that feels especially "And Objects" to you?

NJ: The interlaced braids. They carry the same sense of rhythm and sculptural tactility we explore in our furniture. There's a clarity to the form that feels very much like our design language, simply translated to a more intimate scale.





Trimming Trailblazers

It's time to rewrite your trimming playbook. This season, we spotlight a new wave of designers expressing their distinct creative voices through the language of trim, showcasing how passementerie continues to evolve in the hands of forward-thinking talents. From daring juxtapositions to quietly disruptive touches, their work reveals just how far a single cord, fringe, or tassel can go in reshaping a room... and the future of trimming.

Muse Noire Interiors



Design by Muse Noire | Photography by Markus Wilborn



For Ashley Ross of Muse Noire Interiors, design is a way to illuminate culture, memory, and belonging. In her immersive installation *Sit Lux Prive* from the Kips Bay Decorator Show House in Dallas, Ross transformed a private tasting lounge into a living narrative, marking a full-circle moment for Ross as an alumna of the Boys & Girls Club.

Trim, like every detail in the space, became part of a larger visual language. Striking Calisto Key Tassels in Crimson added dramatic weight to the base of each bespoke tracer loop light, and a *Saisons Tassel Tieback* in Geranium anchored an abstract corner installation, bold visual beacons that invite guests to step into the light and engage in deeper conversations about home, history, and identity.

James Thomas Interiors

Ascending the "Painted Passage" by James Thomas Interiors, a radiant vignette unfolds in clever chair-tie applications, bountiful fringe, and climbing borders, unified through a sophisticated primary palette inspired by the Greek Islands and Amalfi Coast.

The Annecy Cord and Chair Tassel in Red and Gold transform a mounted photograph into an elegant illusion, appearing to suspend the frame with unexpected whimsy. Rich warmth continues with the Cambridge Strié Braid in Cranberry, which outlines a tiger-striped chair, accompanied by a delicate coordinating Cord. The braid reappears

on the window's crimson cornice in the shade Blue Wonder, perched above patterned drapery featuring the Sloane Velvet Border in Merlot, a palette that recalls sunlit facades and shadows along the coast at sunset.

The same border circles a zigzag table skirt layered with the ochre glow of the Sophie Border and Bullion Fringe in Dijon, while a footstool nearby gains soft dimension from Cambridge Cord and Strata Marabout in Navy. A striped drape defines the vignette from the adjacent room, gathered to the side by a Sophie Cable Holdback in Dijon.



Design by James Thomas Interiors | Photography by Nick Johnson Interiors



Tucked below the captivating rear stair hall, James Thomas Interiors wrapped a jewel box powder room in patterned wallpaper outlined with Le Jardin Silk Gimp in Ocean, building on the ornate sink's porcelain blues. Illuminating this decadent nook, domed sconces are defined by the Cambridge Strié Braid in Cranberry. Echoed just outside in the hall, bespoke ceiling lights mirror their form, completing what Thomas describes as "our version of golden hour."

"When selecting trim, we approach it as both a finishing touch and a vital layer of design... Every border, fringe, and cord becomes part of the design's cadence, adding a refinement that subtly completes the story."

James Thomas Interiors

Toni Black



Photography by James McDonald



Photography by Milo Brown

Grounded in the timeless ritual of storytelling among women, Toni Black of Blacksheep Interiors crafted the intimate Gathering Bar at WOW!house 2025. A masterclass in warmth and allure, this home bar champions craftsmanship, enveloping guests in a cozy cocoon of trimmings, where every detail encourages lingering and rich conversation.

Thoughtfully layered trimmings play a crucial role in shaping this ambiance, placing emphasis on soft, welcoming curves. Inca Brush Fringe in Rainforest adds a tasteful skirt to each barstool, while a plush banquette airs more on the side of statement-making with the Margaux Bullion Fringe in Aubergine. The pillows above are encircled by a dynamic mix of Trianon Cord in Citrine, Swiss Velvet Piping in Graphite, and Carolina Ombré Brush Fringe in Tuscany. Heavy velvet drapery receives a Carolina Ombré Tassel Fringe leading edge in a lively Tuscany palette, a final tactile accent that invites guests to relax and stay awhile.

“We used trimmings from Samuel & Sons as an extra layer of texture — a series of subtle touchpoints that bring finesse, curiosity, and a little surprise to the space. On the curtains, the trim adds a fun and unexpected detail, while across the cushions, sofa and bar stools, the colours echo the room’s palette but also introduce fresh notes of teal and different takes on blush, adding contrast without feeling too matched.”

Toni Black, Luxury Interior Design Director & Partner, Blacksheep





Ashton Collection

A refined wool collection of classic borders, fringes,
and cords in a palette of sophisticated colors.



The Ashton Houndstooth Border in Saville Navy is a broad, two-tone 3.5" wool edging that brings the language of heritage menswear into interiors. Its nuanced palette layers navy with beige, ivory, and a subtle crimson accent, evoking academic robes, naval tradition, and twilight skies.





“With Ashton, we wanted to capture the richness of wool and give it a fresh point of view,” says Marisa Gutmacher, Vice President of Design at Samuel & Sons. “The collection is about detail and heritage, but also about creating trimmings that feel current, pieces that work seamlessly with everything from plaids and tweeds to clean, modern plains.”



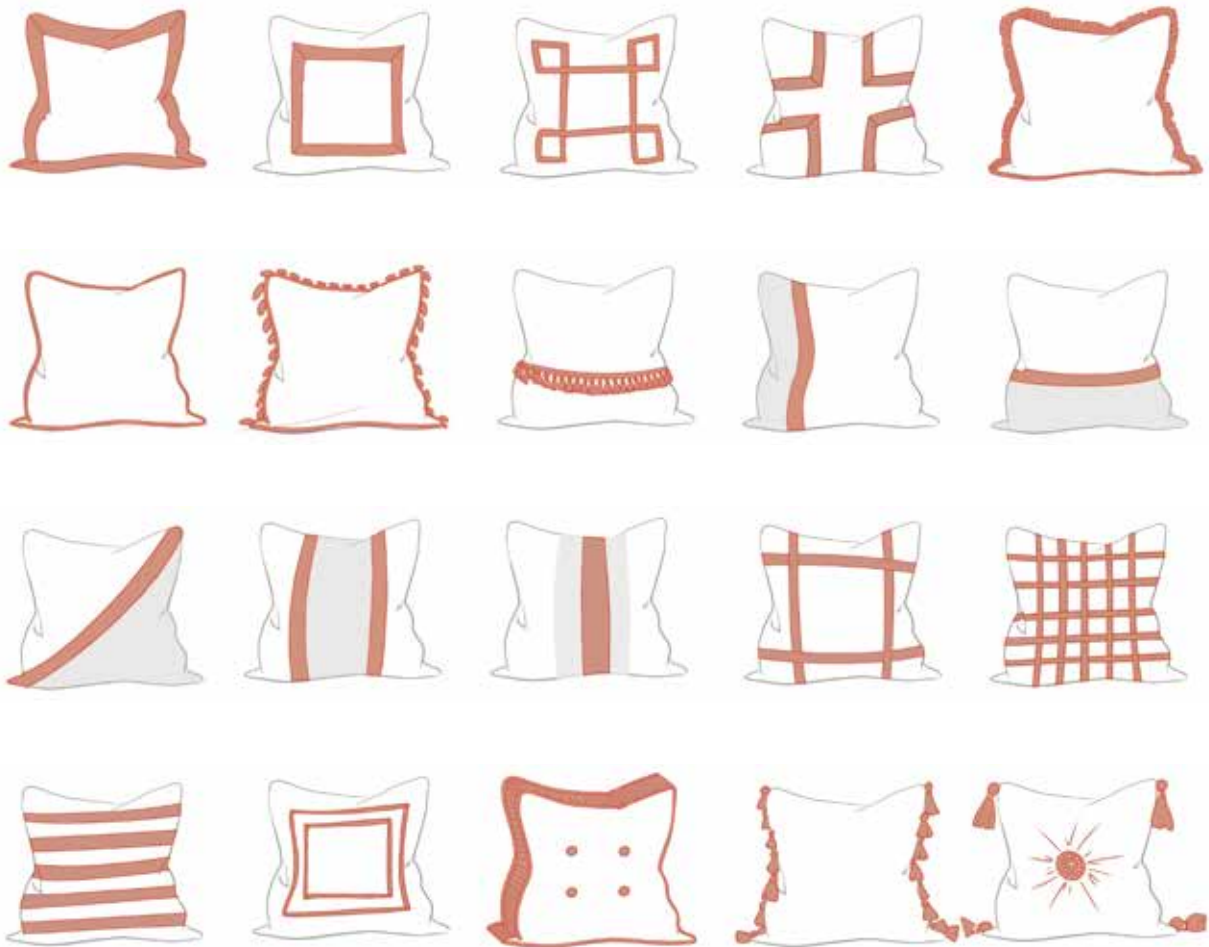


INTRODUCING THE SAMUEL & SONS EDUCATION PLATFORM

Passementerie brings personality, texture, and artistry to any space. Tassels, cords, borders, and fringes unlock countless ways to elevate pillows, lampshades, drapery, and more.

The Samuel & Sons Education Platform is a curated guide to using color, layering, and unexpected accents, showing how even the smallest details can elevate design. Alongside inspiration, it also provides practical tools: terminology, tutorials, size specifications, and other fundamental information to support your creative process.

With over 10,000 trims, Samuel & Sons offers limitless opportunities to bring your ideas to life.



Discover more at samuelandsons.com/education



Devon Collection

Devon is an elegant collection of fine linen appliqué, velvet, and wool borders, featuring various silhouettes in a beautiful palette of colors.







Westport Collection

An exceptional collection of sustainable, high-performance cords, borders, and fringes in an array of strié hues, suitable for use indoors and out.



Annecy Collection

Third Edition

A classical collection of twisted ply cords, complemented by an intricately woven scalloped gimp, brush fringe, and chair tassel in a comprehensive assortment of mélange colors.



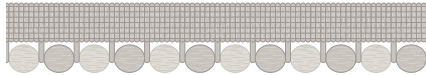
Romaunt Collection

SAMUEL & SONS
MARTIN BRUDNIZKI



CT-61732 3/16" (5 mm)
Romaunt Cord with Tape /
Câblé sur pied
100% PES

Colours : Arcadia Multi, Boreas Oyster, Mallais Gold,
Ophelia Emerald, Proserpine Burgundy, Rêverie Terra,
Rossetti Crimson, Waterhouse Blue



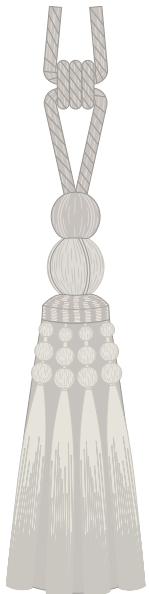
CT-61734 7/16" (11 mm)
Romaunt Beaded Cord /
Câblé perles
64% Plastic Beads, 36% PES

Colours : Arcadia Multi, Boreas Oyster, Mallais Gold,
Ophelia Emerald, Proserpine Burgundy, Rêverie Terra,
Rossetti Crimson, Waterhouse Blue



BR-61736 2" (51 mm)
Romaunt Blocked Brush Fringe /
Marabout effilé
100% PES

Colours : Arcadia Multi, Boreas Oyster, Mallais Gold,
Ophelia Emerald, Proserpine Burgundy, Rêverie Terra,
Rossetti Crimson, Waterhouse Blue



TT-61739
Romaunt Tassel Tieback /
Embrasse à glands
83% PES, 13.5% WD, 3.5% Plastic Beads
Height / Hauteur : 12.50" (31.8 cm)
Spread / Ouverture : 36" (91.4 cm)

Colours : Arcadia Multi, Boreas Oyster, Mallais Gold,
Ophelia Emerald, Proserpine Burgundy, Rêverie Terra,
Rossetti Crimson, Waterhouse Blue



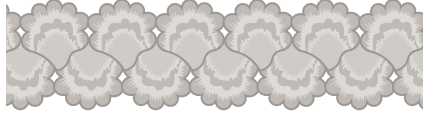
GB-61733 9/16" (16 mm)
Romaunt Gimp /
Lézarde
100% PES

Colours : Arcadia Multi, Boreas Oyster, Mallais Gold,
Ophelia Emerald, Proserpine Burgundy, Rêverie Terra,
Rossetti Crimson, Waterhouse Blue



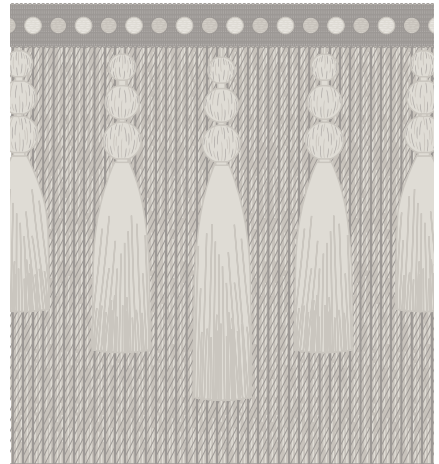
TF-61735 1.4" (35 mm)
Romaunt Beaded Fringe /
Frangé perles
Repeat / Raccord : 13/16" (21.8 mm)
75% Plastic Beads, 25% PES

Colours : Arcadia Multi, Boreas Oyster, Mallais Gold,
Ophelia Emerald, Proserpine Burgundy, Rêverie Terra,
Rossetti Crimson, Waterhouse Blue



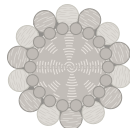
BT-61712 2" (51 mm)
Romaunt Embroidered Border /
Galon brodé
Repeat / Raccord : 1.25" (32 mm)
100% VI

Colours : Arcadia Multi, Boreas Oyster, Mallais Gold,
Ophelia Emerald, Proserpine Burgundy, Rêverie Terra,
Rossetti Crimson, Waterhouse Blue



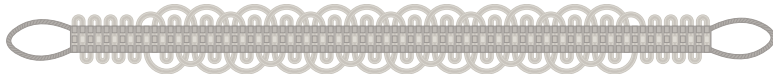
BU-61737 8.25" (21 cm)
Romaunt Tasseled Bullion Fringe /
Frangé moulignée mèches
Repeat / Raccord : 5.15" (13 cm)
79% PES, 21% Plastic Beads

Colours : Arcadia Multi, Boreas Oyster, Mallais Gold,
Ophelia Emerald, Proserpine Burgundy, Rêverie Terra,
Rossetti Crimson, Waterhouse Blue



RT-61738 2.25" (57 mm)
Romaunt Rosette /
Cartisane
90% Plastic Beads, 10% PES

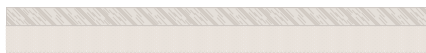
Colours : Arcadia Multi, Boreas Oyster, Mallais Gold,
Ophelia Emerald, Proserpine Burgundy, Rêverie Terra,
Rossetti Crimson, Waterhouse Blue



HB-61740
Romaunt Crete Holdback /
Embrasse guipure
100% PES

Spread (Including Loop) / Ouverture (Avec boucle) : 39.25" (100 cm),
Loop Length / Longueur de boucle : 4" (10mm)
Colours : Arcadia Multi, Boreas Oyster, Mallais Gold, Ophelia Emerald,
Proserpine Burgundy, Rêverie Terra, Rossetti Crimson, Waterhouse Blue

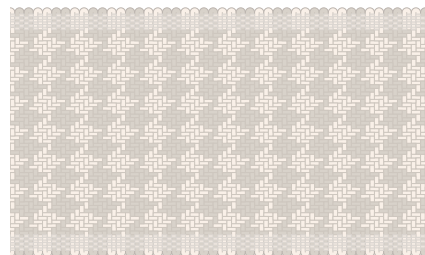
Ashton Collection



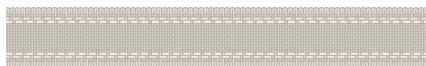
CT-61823 1/4" (6 mm)
Ashton Cord with Tape /
Câblé sur pied
 40% VI, 28% WO, 24% PES, 8% CO
Colours : Berrywood, Cotswold Gold, Foxglove,
Heathcliff Brown, Lambswool, Savile Navy,
Springhouse Mist, Verdant Moor



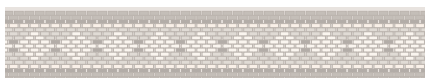
GB-61824 11/16" (18 mm)
Ashton Gimp /
Lézarde
 95% WO, 5% PES
Colours : Barley, Berrywood, Cornmeal,
Cotswold Gold, Foxglove, Heathcliff Brown,
Ivory, Lambswool, Orchard Port, Savile Navy,
Sea Tarn, Springhouse Mist, Thornwood Green,
Verdant Moor



BT-61829 3.25" (82 mm)
Ashton Houndstooth Border /
Galon pied de poule
 Repeat / Raccord : 3/8" (10 mm)
 58% WO, 42% PES
Colours : Berrywood, Cotswold Gold, Foxglove,
Heathcliff Brown, Lambswool, Savile Navy,
Springhouse Mist, Verdant Moor



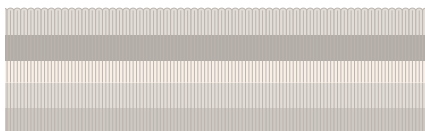
BT-61825 13/16" (20 mm)
Ashton Border /
Galon
 80% WO, 20% PES
Colours : Berrywood, Cotswold Gold, Foxglove,
Heathcliff Brown, Lambswool, Savile Navy,
Springhouse Mist, Verdant Moor



BT-61826 1" (26 mm)
Ashton Diamond Border /
Galon diamant
 Repeat / Raccord : 3/4" (19 mm)
 62% PES, 38% WO
Colours : Berrywood, Cotswold Gold, Foxglove,
Heathcliff Brown, Lambswool, Savile Navy,
Springhouse Mist, Verdant Moor



FR-61827 1.25" (32 mm)
Ashton Blocked Fringe /
Effilé
 Repeat / Raccord : 2.2" (56 mm)
 96% WO, 4% PES
Colours : Berrywood, Cotswold Gold, Foxglove,
Heathcliff Brown, Lambswool, Savile Navy,
Springhouse Mist, Verdant Moor



BT-61828 1.65" (41 mm)
Ashton Striped Border /
Galon rayé
 60% PES, 40% WO
Colours : Berrywood, Cotswold Gold, Foxglove,
Heathcliff Brown, Lambswool, Savile Navy,
Springhouse Mist, Verdant Moor

Devon Collection



BT-60656 1.5" (38 mm)
Dorset Velvet Scallop /
Galon velours Dorset
 Repeat / Raccord : 2.6" (66 mm)
 40% CO, 40% VI, 20% Spun PES
Colours : Aquamarine, Carbon, Cerulean, Coral, Fern, Flax, Gold, Honey, Leaf, Midnight, Oyster, Porcelain, Terra, Vermillion



BT-61520 1.5" (38 mm)
Claire Appliqué Border /
Galon d'application Claire
 Repeat / Raccord : 2.62" (67 mm)
 88% LI, 12% PES
Colours : Blossom, Crest



BT-61521 2" (51 mm)
Devon Appliqué Border /
Galon d'application Devon
 Repeat / Raccord : 2.5" (63 mm)
 86% LI, 14% PES
Colours : Bisque, Celadon, Chocolate, Leaf, Navy



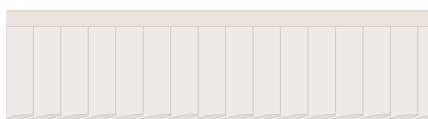
BT-61524 2" (51 mm)
Tess Scalloped Border /
Galon festonné Tess
 Repeat / Raccord : 2.75" (70 mm)
 79% LI, 21% PES
Colours : Cream



BT-61523 2" (51 mm)
Peyton Embroidered Border /
Galon brodé Peyton
 Repeat / Raccord : 2.75" (70 mm)
 50% WO, 50% VI
Colours : Celadon, Cream, Dove, Eggshell



BT-61522 2.5" (63 mm)
Finlay Scalloped Border /
Galon festonné Finlay
 Repeat / Raccord : 1.625" (41 mm)
 100% PES
Colours : Camel, Ivory, Mineral, Onyx



BT-61525 2" (51 mm)
Greer Pleated Border /
Galon plissé Greer
 Repeat / Raccord : 1/2" (12 mm)
 100% CO
Colours : Pearl, Sterling, White Gold



BT-61518 2.5" (63 mm)
Ainsley Scalloped Border /
Galon festonné Ainsley
 Repeat / Raccord : 2" (51 mm)
 100% LI
Colours : Blossom, Ice Blue, Platinum



BT-61519 3" (76 mm)
Cecilly Appliqué Border /
Galon d'application Cecilly
 Repeat / Raccord : 5.625" (14.3 cm)
 83% LI, 17% PES
Colours : Bisque, Platinum

Annecy Collection



982-30702 1/2" (12 mm)
1/2" Annecy Gimp /
Lézarde
 100% VI
Colours : Cadet, Carnation, Conch Shell, Crimson/Fern, Espresso, Hemlock, Nectarine, Oatmeal, Platinum, Sea Grass, Tearose, Water



981-31058 1/4" (4.5 mm)
1/4" Annecy Cord With Tape /
Câblé sur pied
 65% CO, 35% VI
Colours : Cadet, Carnation, Conch Shell, Crimson/Fern, Espresso, Hemlock, Nectarine, Oatmeal, Platinum, Sea Grass, Tearose, Water

For complete Annecy color list visit samuelandsons.com

Westport Collection



CT-61627 5/16" (8 mm)
Westport Piping /
Passepoil
 100% PES
Colours : Beach Glass, Beeswax, Bluestone, Chai, Flint, Lakeside, Parchment, Red Coral, Spring Green, Sunrise



CT-61626 1/4" (5 mm)
Westport Braided Cord with Tape /
Câblé sur pied tressé
 100% PES
Colours : Beach Glass, Beeswax, Bluestone, Chai, Flint, Lakeside, Parchment, Red Coral, Spring Green, Sunrise



GB-61709 9/16" (15 mm)
Westport Gimp /
Lézarde
 100% PES
Colours : Beach Glass, Beeswax, Bluestone, Chai, Flint, Lakeside, Parchment, Red Coral, Spring Green, Sunrise



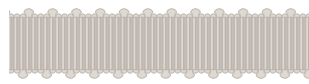
BR-61636 9/16" (14 mm)
Westport Ruche /
Marabout
 100% Solution Dyed Acrylic
Colours : Cloud, Earth, Midnight, Paprika, Sand, Seagull, Starry Night, Wave



BT-61628 1" (25 mm)
Westport Striped Border /
Galon rayé
 100% PES
Colours : Beach Glass, Beeswax, Bluestone, Chai, Flint, Lakeside, Parchment, Red Coral, Spring Green, Sunrise



BR-61630 1.2" (30 mm)
Westport Brush Fringe /
Marabout effilé
 100% PES
Colours : Beach Glass, Beeswax, Bluestone, Chai, Flint, Lakeside, Parchment, Red Coral, Spring Green, Sunrise



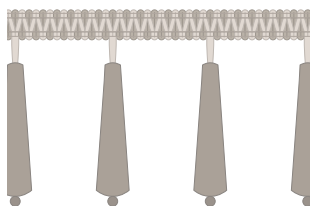
BT-61629 1.55" (40 mm)
Westport Picot Border /
Galon picot
 100% PES
Colours : Beach Glass, Beeswax, Bluestone, Chai, Flint, Lakeside, Parchment, Red Coral, Spring Green, Sunrise



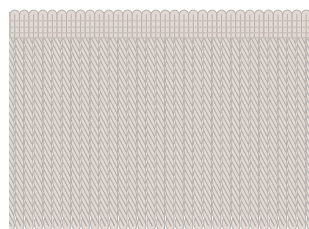
GB-61631 1.4" (35 mm)
Westport Double Cut Braid /
Galon effilé
 100% PES
Colours : Parchment



BT-61632 2.4" (60 mm)
Westport Diamond Border /
Galon diamant
 Repeat / Raccord : 1.25" (31 mm)
 100% PES
Colours : Beach Glass, Beeswax, Bluestone, Chai, Flint, Lakeside, Parchment, Red Coral, Spring Green, Sunrise



TF-61633 3.55" (90 mm)
Westport Beaded Fringe /
Frangé perles
 Repeat / Raccord : 1.75" (45 mm)
 89% WD, 11% PES
Colours : Parchment



BU-61634 4" (10 cm)
Westport Bullion Fringe /
Frangé moulignée
 100% PES
Colours : Beach Glass, Beeswax, Bluestone, Chai, Flint, Lakeside, Parchment, Red Coral, Spring Green, Sunrise



STANDARD
100

22.HCN.45095
Institute



STANDARD
100

0712041
Institute

STANDARD 100: Most common; means every component of the item (threads, buttons, etc.) is tested for harmful substances.
 Westport Collection recycled polyester (Sunpro) and outdoor acrylic yarns both are OEKO-TEX "Standard 100" certified only.

Annecy Collection



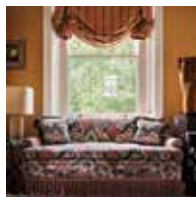
983-38120 1.5" (40 mm)
1.5" Annecy Brush Fringe /
Marabout effilé
 90% VI, 10% WO
Colours : Cadet, Carnation, Conch Shell, Crimson/Fern, Espresso, Hemlock, Nectarine, Oatmeal, Platinum, Sea Grass, Tearose, Water



976-31654 33" (84 cm)
Annecy Chair Tassel /
Jeu de glands
 Length / Longueur: 33" (84 cm)
 83% VI, 15% WD, 2% CO
Colours : Cadet, Carnation, Conch Shell, Crimson/Fern, Espresso, Hemlock, Nectarine, Oatmeal, Platinum, Sea Grass, Tearose, Water



Cover: From left to right: Ashton Diamond Border in Verdant Moor and Berrywood and Ashton Gimp in Verdant Moor



Page 7: From top to bottom: Romaunt Gimp, Romaunt Rosette and Romaunt Beaded Cord in Rossetti Crimson, Kensington Onion Tassel Fringe in Royal Oak, Romaunt Cord with Tape and Romaunt Tasseled Bullion Fringe in Rossetti Crimson



Page 11: From top to bottom: Romaunt Beaded Fringe in Rêverie Terra, Romaunt Brush Fringe in Millais Gold and Romaunt Gimp in Waterhouse Blue



Romaunt Beaded Fringe in Proserpine Burgundy



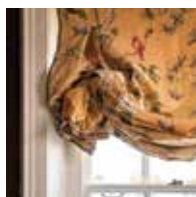
Page 8: From top to bottom: Romaunt Gimp in Arcadia Multi, Romaunt Cord with Tape and Romaunt Beaded Cord in Rêverie Terra



Page 12: From top to bottom: Romaunt Embroidered Border in Arcadia Multi, Romaunt Beaded Fringe and Romaunt Blocked Brush Fringe in Ophelia Emerald, Romaunt Beaded Cord in Arcadia Multi and Romaunt Tasseled Bullion Fringe in Waterhouse Blue



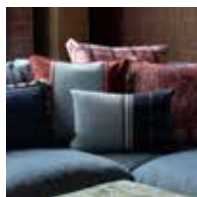
Page 2: Ashton Gimp in Ivory



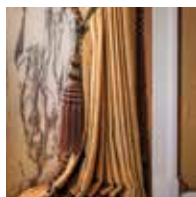
Page 9: Romaunt Gimp and Romaunt Beaded Cord in Millais Gold



Page 13: Romaunt Embroidered Border in Rossetti Crimson



Page 4: Top: Ashton Houndstooth Border in Berrywood. Middle, from left to right: Ashton Cord with Tape, Ashton Diamond Border and Ashton Blocked Fringe in Berrywood. Bottom, from left to right: Ashton Blocked Fringe, Ashton Cord with Tape, Ashton Border, Ashton Gimp and Ashton Striped Border in Savile Navy.



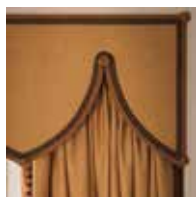
Page 10: Romaunt Beaded Fringe and Romaunt Tassel Tieback in Rêverie Terra



Page 20: From top to bottom: Ashton Cord with Tape in Verdant Moor, Ashton Diamond Border in Heathcliff Brown and Ashton Gimp in Verdant Moor



Page 6: Romaunt Rosette in Proserpine Burgundy



Page 11: Romaunt Gimp and Romaunt Beaded Fringe in Rêverie Terra



Page 21: Ashton Houndstooth Border in Verdant Moor



Page 22: Ashton Blocked Fringe and Ashton Cord with Tape in Cotswold Gold
Fabric: Nobilis



Page 26: Clockwise from top to bottom: MDS Stripe Piping in Sapphire, Heko Embroidered Border in Koi, Cavallo Brush Fringe in Sail, Françoise Border in Currant, Tenga Embroidered Border in Moonbeam, 1/8" Cambridge Cord with Tape in Tabasco, Sakiori Embroidered Border in Navy, Julienne Piping in Milkweed and Nagoya Embroidered Border in Ink



Page 32: 1/2" Annecy Gimp in Coral



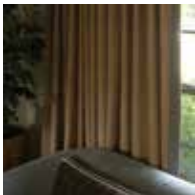
Page 23: Ashton Houndstooth Border in Savile Navy



Page 28: Tess Scalloped Border in Cream



Page 33: Annecy Chair Tassels in Dresden and 1/2" Annecy Gimp in Coral



Page 23: Ashton Houndstooth Border and Ashton Diamond Border in Savile Navy



Page 29: Greer Pleated Border in Pearl and Cecilly Appliqué Border in Platinum



Page 24: Ashton Blocked Fringe in Springhouse Mist and Ashton Gimp in Orchard Port



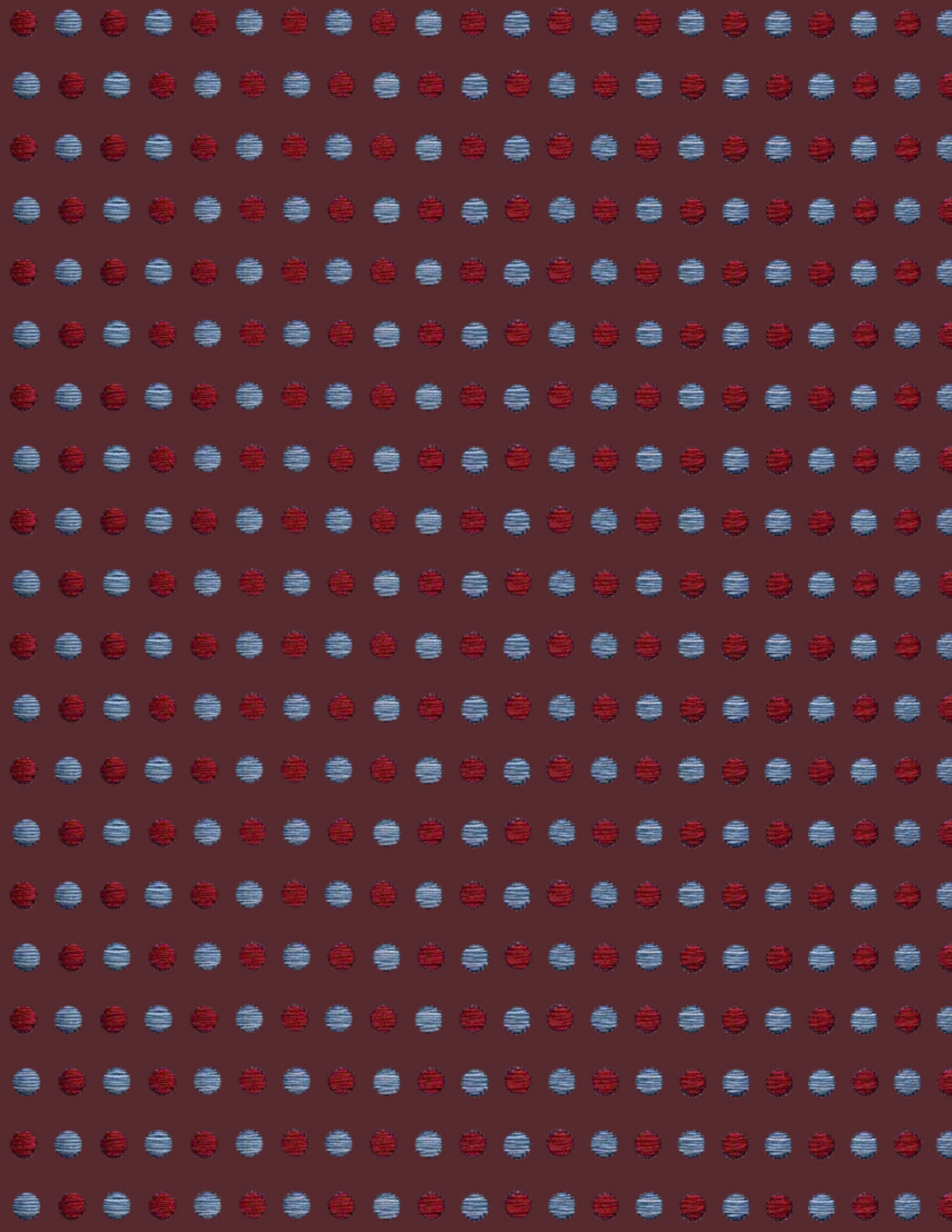
Page 30: From top to bottom: Westport Gimp in all colors, Westport Bullion Fringe in Bluestone, Westport Diamond Border in Sunrise, Westport Striped Border in Bluestone and Westport Brush Fringe in Beeswax
Fabric: Pollack, Romo



Page 25: Ashton Blocked Fringe in Springhouse Mist, Ashton Gimp in Orchard Port and Ashton Cord with Tape in Foxglove



Page 31: Westport Diamond Border in Lakeside, Bluestone and Beach Glass



US: 212.704.8000
UK/EU: +44 (0) 20.7351.5153
FR: +33 (0)1 42.33.22.90
SAMUELANDSONS.COM

Hats off
to trim



SAMUEL & SONS IS TRIM.
samuelandsons.com

